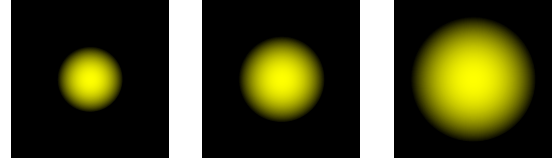
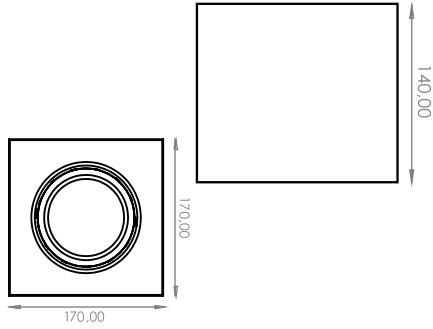
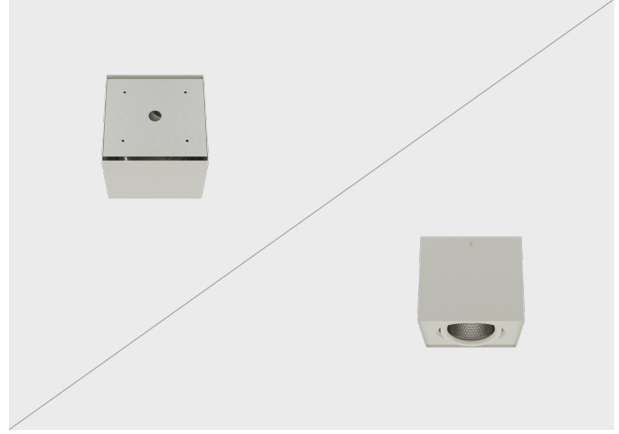
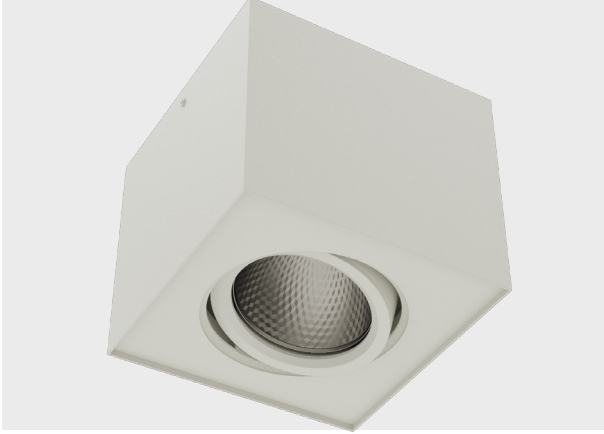


Surface Mounted Series DIO 5110

DIODO



14°

36°

60°



20°

20°

www.diido.com.tr

Materyal:	Alüminyum Gövde
Işık Kaynağı:	COB LED
Güç:	20W, 30W, 40W
Işık Renkleri:	2700K, 3000K, 3500K, 4000K, 5000K, 6500K
Renksel Geri Verim İndeksi (CRI):	80+, 90+
Reflektör Açısı:	14, 36, 60°
Çalışma Gerilimi:	220-240V / 50-60Hz
Gövde Boya Tipi:	Elektrostatik Toz Boya
IP Koruma Sınıfı:	IP20
Montaj Tipi:	Sıva Üzeri
Menşei:	Türkiye
Garanti:	5 Yıla kadar

Body Material:	Aluminum Body
Light Source:	COB LED
Power:	20W, 30W, 40W
Light Color (CCT):	2700K, 3000K, 3500K, 4000K, 5000K, 6500K
Color Rendering Index (CRI):	80+, 90+
Beam Angle:	14, 36, 60°
Mains Voltage:	220-240V / 50-60Hz
Painting Type:	Electrostatic Powder Coating
IP Protection Glass:	IP20
Installation:	Surface Mounted
Origin:	Turkey
Warranty:	Up to 5 years



CODE	WATT	DRIVER CURRENT	LUMEN
5111	20 Watt	500 mA	2100 lm
5112	30 Watt	700 mA	3150 lm
5113	40 Watt	900 mA	4200 lm

AKSESUARLAR / ACCESSORIES

Kamařma Önleyici / Antiglare Screen



Iřık Siperi / Visor



Petekli Filtre / Honeycomb Filter

